

# News FOR YOU...

Barron Electric  
Cooperative  
November 2023  
Photo by  
William Tews

## *Celebrating the Cooperative Difference with Our Members*

Nearly 1,500 members and guests attended the Cooperative Month events in October. One of the seven cooperative principles is "Member Economic Participation." Barron Electric returned more than \$900,000 in cashback credits to over 14,000 members and former

members. Cooperatives and community organizations worked together to provide members with valuable information. Over 1,300 items were donated to the Turtle Lake and Washburn County Food Pantries. The food pantry drawing winners were Richard Hansen, Elaine Garling, and Mary Pokorny.

### **Grand Prize Winners**

Debbie Nichols, Tom Whalen, Rose Miller, and Terry Bentley were the winners of the grand prizes from Barron Electric Cooperative, Citizens Connected, Mosaic Technologies, and WESTconsin Credit Union.



Nearly 1,500 members and guests attended Cooperative Month events, which included bucket truck rides, cashback credit checks, homemade ice cream, lunch, and prizes.

# Bratagers Exemplify Commitment to Community

Matt and Darlene Bratager were nominated for Barron Electric's Megawatt Community Service Award for their involvement in their community.



Matt and Darlene Bratager enjoy helping their community succeed.

Darlene has been a member of Jaycettes, Lion's Club, and Rocky Mountain Elk Foundation (RMEF). RMEF's mission is to ensure the future of elk, other wildlife, their habitat and our hunting heritage. Darlene was a Den Leader for Cub Scouts. She also assisted with Youth Ski League through Cumberland Area Ski Touring Association (CASTA). CASTA was instrumental in building Timberland Hills and Timberland West cross country ski trails. These trails have become a year-round destination for a variety of trail users. Darlene was a mentor for Kinship of Cumberland and Turtle Lake, helping make a difference in the life of a youth. She currently serves as the treasurer of the Council of Catholic Women, secretary of the Cumberland Health Care Volunteers, treasurer of the Vermillion Lake Association, and is a member of the Cumberland Woman's Club.

Matt was involved in Jaycees, Lion's Club, and was a Kinship Mentor. He served as treasurer for four years for CASTA and also helped with Youth Ski League. He was the past co-chair for Rocky Mountain Elk Foundation. He is currently in the American Legion Honor Guard, helps with trail work for CASTA, and is a member of the Knights of Columbus.

Both Darlene and Matt enjoy volunteering for Ruby's Pantry.

## \$50 Electric Bill Credit

Congratulations to Matt and Darlene Bratager, our latest Megawatt Community Service Award winners. They will receive a \$50 credit on their electric bill. Do you know a member that would make a good Megawatt Community Service Award winner? Visit [barronelectric.com/megawatt-community-service-award](http://barronelectric.com/megawatt-community-service-award) to complete the online form.

## Your Family Photo Could Win a \$100 bill Credit

Barron Electric is looking for a family photo to feature on the cover of the 2024 Annual Report. If your photo is chosen, you will win a \$100 credit on your electric bill.

- Photos must be high resolution, 300 dpi or higher.
- Member must own rights to the photo.
- E-mail your digital image to [memberservices@barronelectric.com](mailto:memberservices@barronelectric.com) by November 15, 2023. Include your Barron Electric account number, address, and phone number.
- By submitting your photo, you are granting Barron Electric permission to use your photo in our annual report, on our website, and other publications.

## \*Condensed Board Minutes

August 30, 2023

\* View full board minutes on SmartHub at [barronelectric.com](http://barronelectric.com).

Larry Kuhl represents District 5 on Barron Electric's Board of Directors, which includes the townships of Long Lake, Bear Lake, Oak Grove, Stanfold, Rice Lake, and Doyle.



- Amanda Seger from CFC presented information to the board regarding Key Ratio Trend Analysis (KRTA) specific to the cooperative.
- A report of vouchers for the month was presented as part of the board packet as follows: #102050 through #102167 from CCF Bank in the amount of \$740,576 and capital credit estate checks in the amount of \$16,197. Total receipts in the office - \$3,025,992; total receipts by wire and ACH - \$2,778,097; disbursements by ACH, EFT, wire - \$4,952,713; transfer of funds was made for payroll - \$235,091 and power bill paid on August 30, 2023, in the amount of \$2,657,731.
- A membership list of 90 was presented and accepted without objection.
- Inventory of Work Orders summarizing construction activity for the month of July in the amount of \$238,825.12 was presented for approval and included new services - \$45,782.85; change jobs - \$16,373.61; Other Work Order Projects - \$176,668.66 and 0 retirements. The Inventory of Work Orders stood approved as presented.
- Outages year-to-date stand at 44,787.79 consumer hours off, which is 27.54% below 2022 hours of 61,810.02. Overtime year-to-date is 2,084.00 hours, which is 8.25% above 2022 hours of 1,925.25.

# Energy for Our Future

Dairyland Power Cooperative and its member cooperatives, including Barron Electric, are committed to meeting your electricity needs. Dairyland is part of Midcontinent Independent System Operator (MISO) and sells all of the electricity it generates into the MISO market, while purchasing what it needs to send to its members. MISO is an independent, not-for-profit, member-based organization that manages the flow of high-voltage electricity across 15 U.S. states and the Canadian province of Manitoba. We depend on MISO to generate and transmit the right amount of electricity every minute of every day, reliably, dependably and cost-effectively.

## Wind and Solar

In recent years, aggressive decarbonization goals have changed Dairyland's energy portfolio. Dairyland purchases



wind and additional hydro, solar and biomass generation from facilities in Iowa, Illinois, Minnesota, South Dakota and Wisconsin. Dairyland has power purchase agreements for more than 200 MW of wind generation, while they have 45 megawatts of solar generation capacity. In September, Dairyland submitted a Letter of Interest for funding through the USDA's New Empowering Rural America (New ERA) grants program. Dairyland's proposed



*Dairyland Power's System Operations Center allows operators to monitor the system in real-time, which is critical as system conditions are rapidly changing.*

clean energy projects would include eight solar and four wind energy resources in Wisconsin, Iowa and North Dakota, as part of its grant application. Wind and solar are an important part of our energy mix, but the intermittent nature of these means they cannot be relied upon at

all times of the day.

## Nemadji Trail Energy Center

The Nemadji Trail Energy Center will

be a state-of-the-art natural gas plant in Superior, Wisconsin. This facility will ensure the delivery of safe, reliable and affordable energy, while supporting renewable energy resources.

## Nuclear Energy

Dairyland is committed to the clean energy transition with significant planned wind and solar, in addition to natural gas and exploration of zero-carbon nuclear small modular reactors (SMRs) for reliability.

To maintain reliability and meet carbon-free goals in the future, nuclear energy will need to be a part of the energy mix as well.

*Information Source: Dairyland Power*

## Lever-Bypass Meter Socket Required

Barron Electric strives to provide our members with safe and reliable electric service. As part of that goal, we are changing the requirements for meter sockets on upgrades and new services.

Effective January 2024, Barron Electric will require a lever-bypass meter socket for all upgrades and new services. This meter socket will ensure that members' power remains on when work is being completed on the meter while providing safety to the employees conducting that work.

If you have any questions, please contact the Operations Department at 800-322-1008 or e-mail Operations at [operations@barronelectric.com](mailto:operations@barronelectric.com).





## Win a \$50 Credit

E-mail your holiday photo for a chance to win a \$50 credit on your electric bill. Criteria includes:

- Photos must have a horizontal orientation (landscape) and must be high resolution, 300 dpi or higher.
- Member must own rights to the photo.
- E-mail your digital image to [memberservices@barronelectric.com](mailto:memberservices@barronelectric.com) by November 10, 2023. Include your Barron Electric account number, address, and phone number.
- By submitting your photo, you are granting Barron Electric permission to use your photo in a variety of publications and on our website.



## News FOR YOU...

Barron Electric Cooperative  
Aaron Torud - General Manager  
Carrie Baribeau—Editor  
[cbaribeau@barronelectric.com](mailto:cbaribeau@barronelectric.com)

Office Hours  
7:00 a.m. - 3:30 p.m.  
Monday - Friday

1434 State Highway 25 North  
PO Box 40 • Barron, WI 54812  
(715) 537-3171  
Toll Free: 1-800-322-1008

For Outages Only:  
866-258-8722

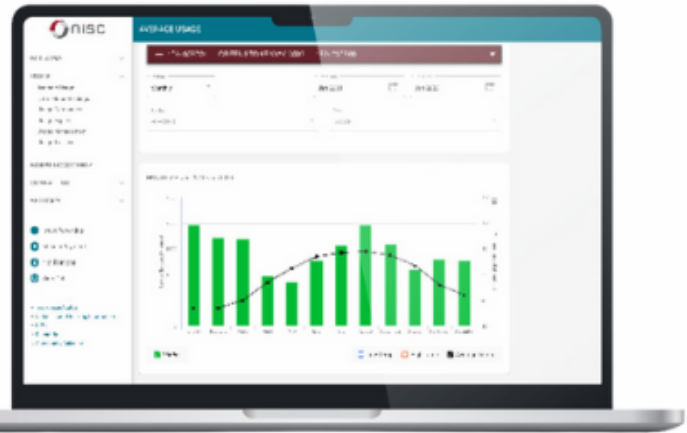
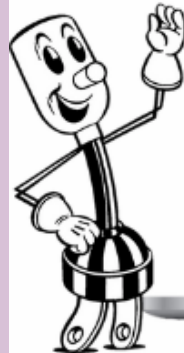
[www.barronelectric.com](http://www.barronelectric.com)



*Published for the members of Barron Electric.  
If you have any comments regarding the  
newsletter, please e-mail  
[cbaribeau@barronelectric.com](mailto:cbaribeau@barronelectric.com)*

*Barron Electric is an equal  
opportunity provider.*

**Happy Thanksgiving! Our office will be closed November 23 and November 24. Have a safe and healthy holiday.**



**NEW LOOK. NEW EXPERIENCE. SAME SMARTHUB.**



Manage your account like never before with the new, improved, SmartHub web application. A simplified, yet enhanced design, is coming soon. This new version of SmartHub puts your usage and payment details front and center for fast, easy access.

If you experience any issues while using SmartHub, please contact our office at 800-322-1008 or [billing@barronelectric.com](mailto:billing@barronelectric.com). Thank you for using SmartHub and being a valued member.

**November 2023 News for You**